

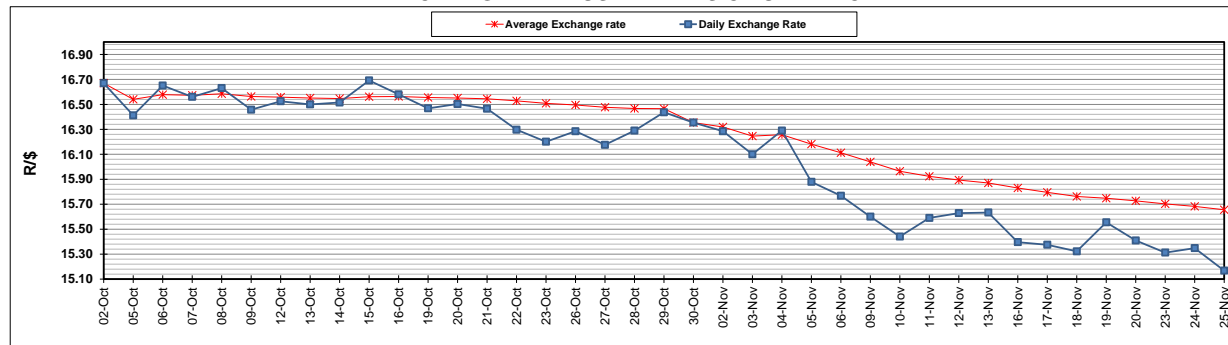
	PETROL 95 ULP	PETROL 93 ULP & LRP	DIESEL 0.05%	DIESEL 0.005%	ILL. PAR.
GAUTENG PUMP PRICE (SA c/l) AS FROM 04/11/2020	1,459.000	1,439.000	-	-	-
WHOLESALE PRICE (SA c/l) AS FROM 04/11/2020	-	-	1,225.560	1,227.960	655.828
SINGLE NATIONAL MAXIMUM RETAIL PRICE	-	-	-	-	818.000
BASIC FUEL PRICE - 25/11/2020 (SA c/l)	512.211	504.489	530.079	531.408	508.837
PRESS RELEASE CONTRIBUTION TO BFP 04/11/2020 - 25/11/2020 (SA c/l)	506.470	496.470	474.630	477.030	451.128
UNIT OVER/(UNDER) RECOVERY - 25/11/2020 (SA c/l)	(5.741)	(8.019)	(55.449)	(54.378)	(57.709)
AVERAGE BASIC FUEL PRICE 30/10/2020 - 25/11/2020	482.540	474.643	486.795	488.849	468.498
AVERAGE UNIT OVER/(UNDER) RECOVERY 30/10/2020 - 25/11/2020	28.193	26.091	(10.270)	(10.082)	(19.739)

ANALYSIS MOVEMENT OF AVERAGE OVER/(UNDER) RECOVERY

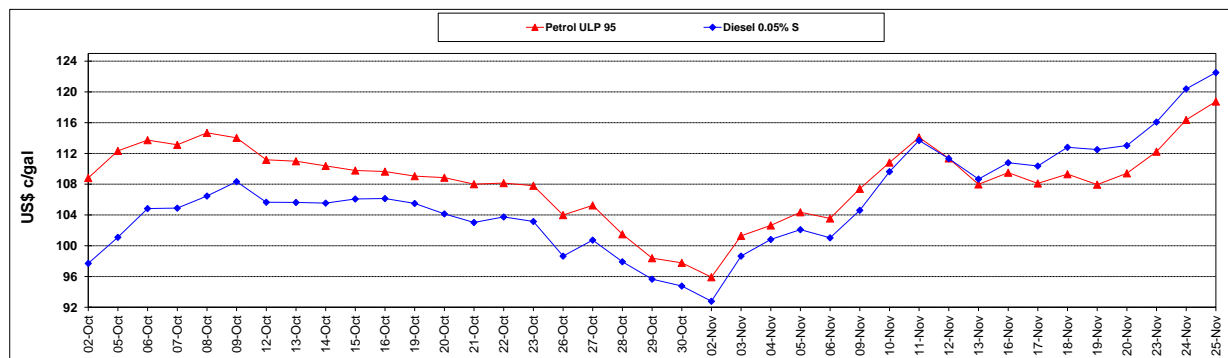
	PETROL 95	PETROL 93	DIESEL 0.05%	DIESEL 0.005%	ILL. PAR.
- MOVEMENT IN INTERNATIONAL PRODUCT PRICES	3.224	1.530	(35.459)	(35.378)	(43.980)
- MOVEMENT IN EXCHANGE RATE	24.969	24.560	25.189	25.296	24.242
AVERAGE UNIT OVER/(UNDER) RECOVERY 30/10/2020 - 25/11/2020	28.193	26.091	(10.270)	(10.082)	(19.739)

R/\$ EXCHANGE RATE - (R/\$15.1678 - 25/11/2020)

EXCHANGE RATE USED IN BASIC FUEL PRICE



INTERNATIONAL PRODUCT PRICES OF BASKET USED IN BASIC FUEL PRICE



BASIC FUEL PRICE IN SA CENTS PER LITRE

